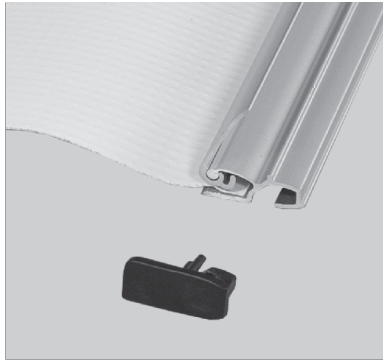


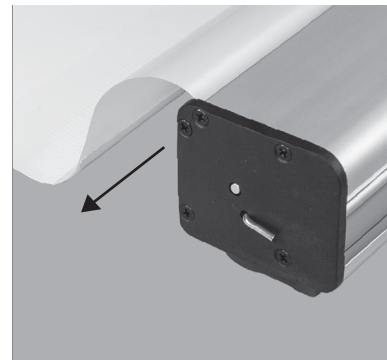
PRINT INSTALLATION



1. Keep print(s) taut while installing into the clamping rail(s). The front of the print(s) must face the same direction as the front of the clamping rail(s). Insert end caps.

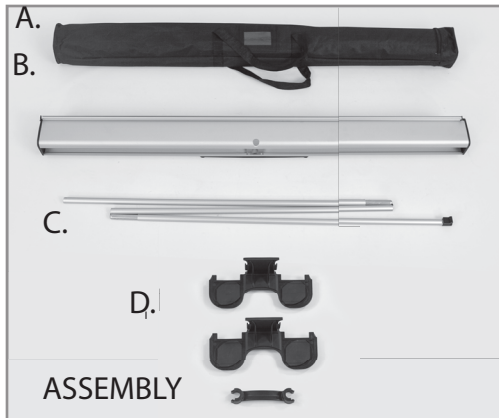


2. Line the bottom of the print(s) up with the adhesive on the insert of the base. The front of the print must face up.

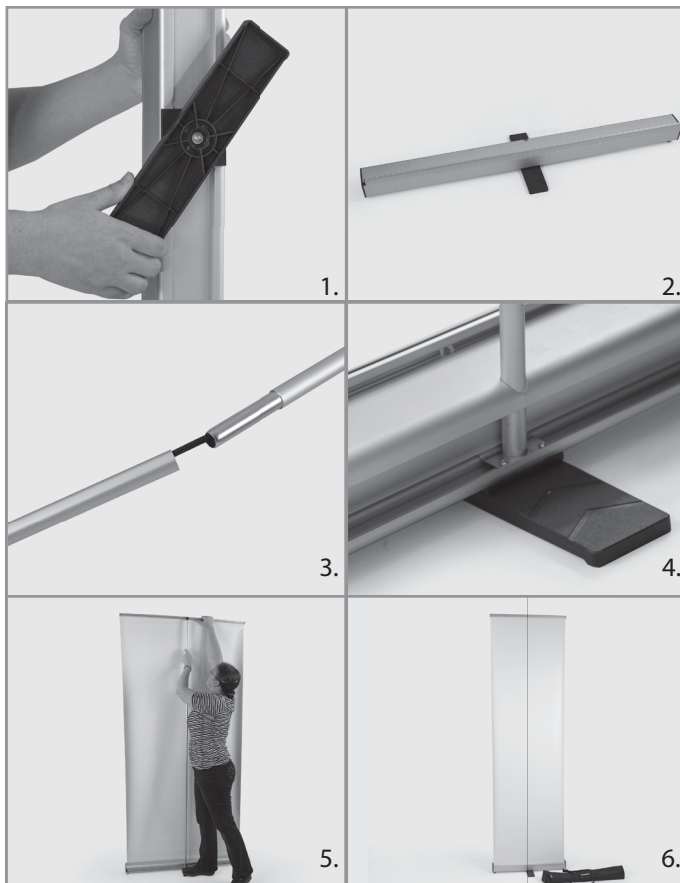


1. Hold the print tightly while removing locking pin. Allow print to roll into the base slowly. For DS model, be sure to do one print at a time after locating the two pins on either side of the base.

ASSEMBLY HARDWARE



A. Carrying case
B. Base
C. Support pole
D. Connecting hardware (optional)



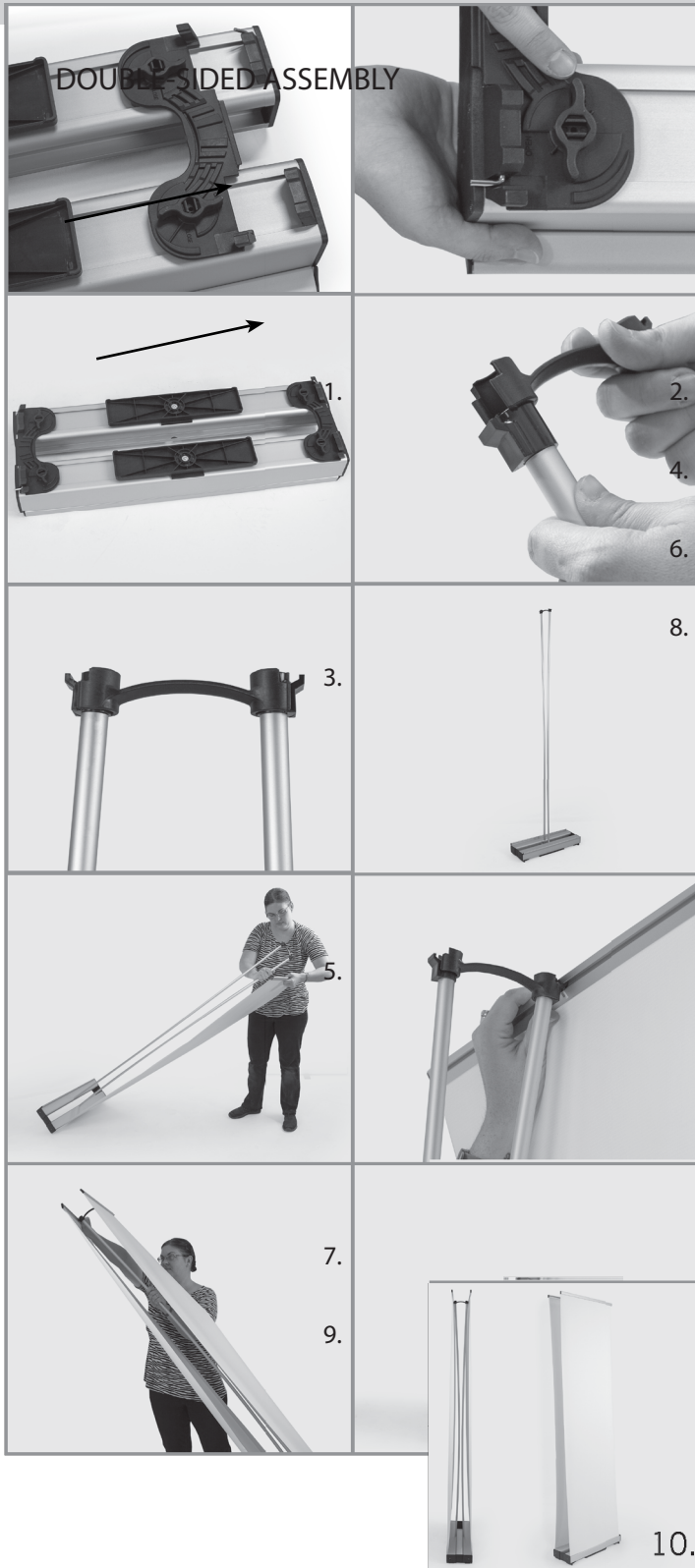
1. Fold out stabilizing foot until it locks into place.
2. Set the entire roll up firmly on the ground.
3. Assemble the support pole by connecting the segmented pole sections.
4. Slide the support pole through the hole on the back of the roll up base and place it into the slot at the bottom of the base.
5. With clean footwear, step on the folded-out foot and pull the up until it meets the clamping rail. Connect the clamping rail to the support pole by sliding the lip of the rail (in the center) over the end of the support pole.
6. Your roll up banner is now assembled.

Scan this code for an assembly video!



DOUBLE-SIDED STANDARD

Assembly Instructions R1.060225



1. Place 2 roll up bases upside down side by side. Slide the connecting hardware across the bottom of both roll up bases until it slides into place.

2. Push switch to "closed".

3. Repeat for other side.

4. Attach connector to one of the support poles.

5. Attach connector to remaining support pole.

6. Slide support poles into backs of roll ups.

7. Pull banner up until it is equal to support pole. Angle the display for this and the next step.

8. Connect the banner clamping rail to the support pole by sliding the lip of the rail (in the center) over the end of the support pole.

9. Repeat to connect the remaining banner.

10. Your double-sided banner is now assembled.