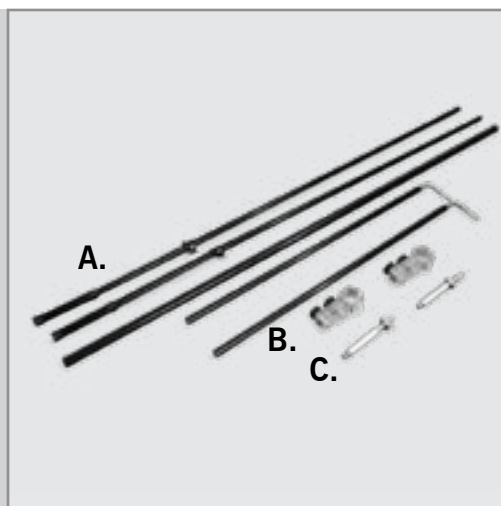


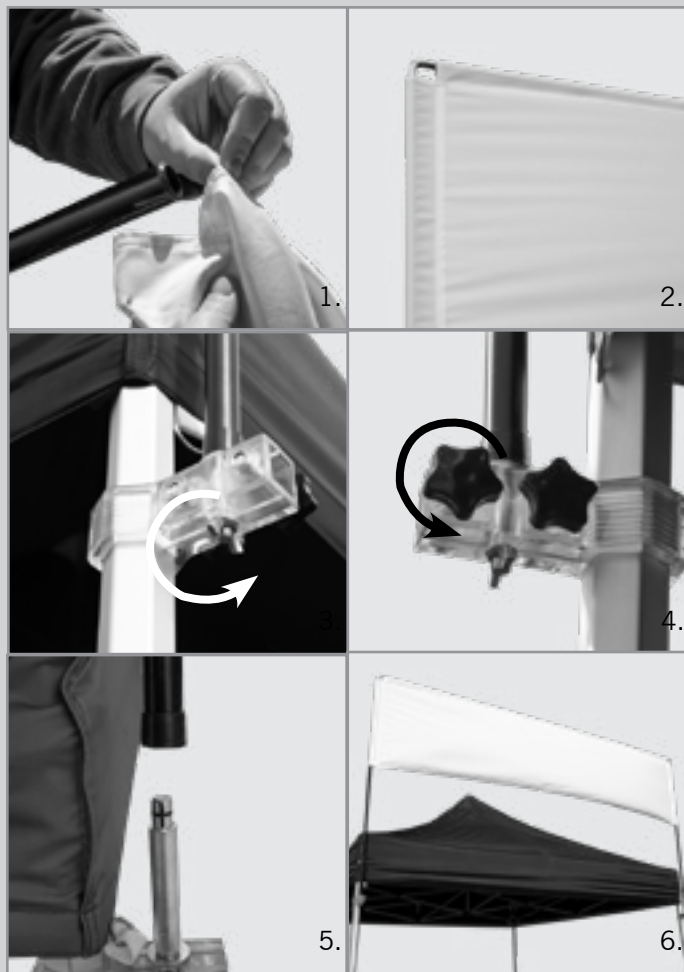
ASSEMBLY HARDWARE



- A. Tent Billboard Frame
- B. Tent Clamps
- C. Thorns



ASSEMBLY FOR SINGLE BANNER STAND



Note: ADDITIONAL PEOPLE MAY BE REQUIRED FOR ASSEMBLY.

ASSEMBLY

1. Insert pole into the top pole sleeve of the banner.
2. Once the top pole is inserted, insert the side poles.
3. Unscrew the wing bolt from the thorn so it can attach to the clamp. Once the thorn is placed in the small hole on the clamp, tighten the wing bolt screw.
4. Tighten the clamp around the tent leg by turning the five-star nut on the clamp.
5. Place each end of the billboard frame over the thorns and gently put the frame on the thorn.
6. Now your tent billboard is ready!

Tent Billboards should not be used in inclement weather, including thunderstorms, heavy rains, lightning, and high winds. Do not use this product in wind gusts exceeding 24mph. Do not use near overhead wires. User must read and observe assembly instructions. If this is not done correctly, it may result in damage to the unit, injury, or death, and all warranties will be void. All warranties will be void if this product is used with any banner or hardware not produced by us.