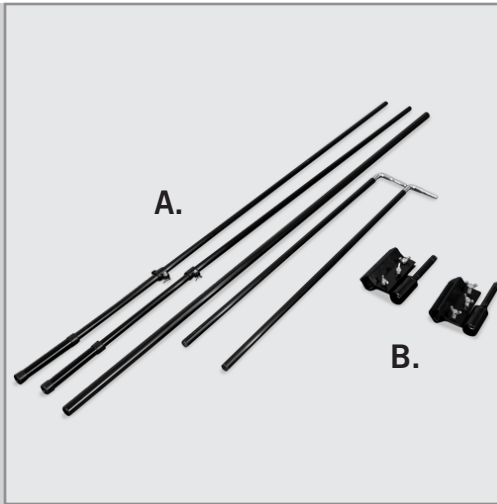


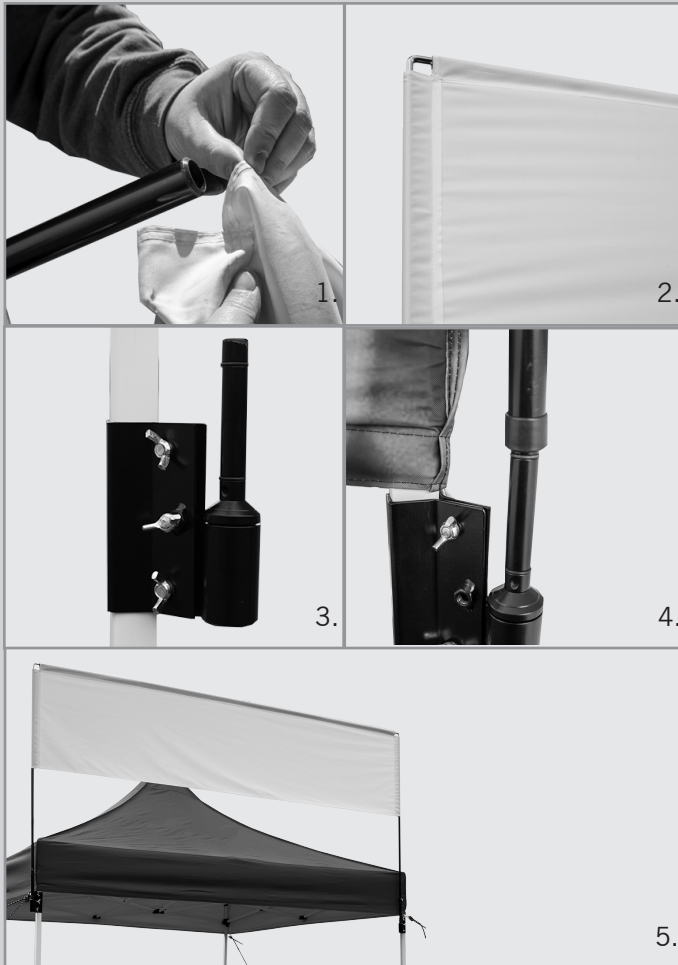
ASSEMBLY HARDWARE



A. Tent Billboard Frame
B. Metal Clamps with Thorns



ASSEMBLY FOR SINGLE BANNER STAND



Note: ADDITIONAL PEOPLE MAY BE REQUIRED FOR ASSEMBLY.

ASSEMBLY

1. Insert pole into the top pole sleeve of the banner.
2. Once the top pole is inserted, insert the side poles.
3. Unscrew the wing bolt and place the metal clamp around the tent leg. Once the clamp is around the leg, use the wing bolt to tighten the clamp.
4. Place each end of the billboard frame over the thorns and gently put the frame on the thorn.
5. Your tent billboard is ready!

Tent Billboards should not be used in inclement weather, including thunderstorms, heavy rains, lightning, and high winds. Do not use this product in wind gusts exceeding 24mph. Do not use near overhead wires. User must read and observe assembly instructions. If this is not done correctly, it may result in damage to the unit, injury, or death, and all warranties will be void. All warranties will be void if this product is used with any banner or hardware not produced by us.